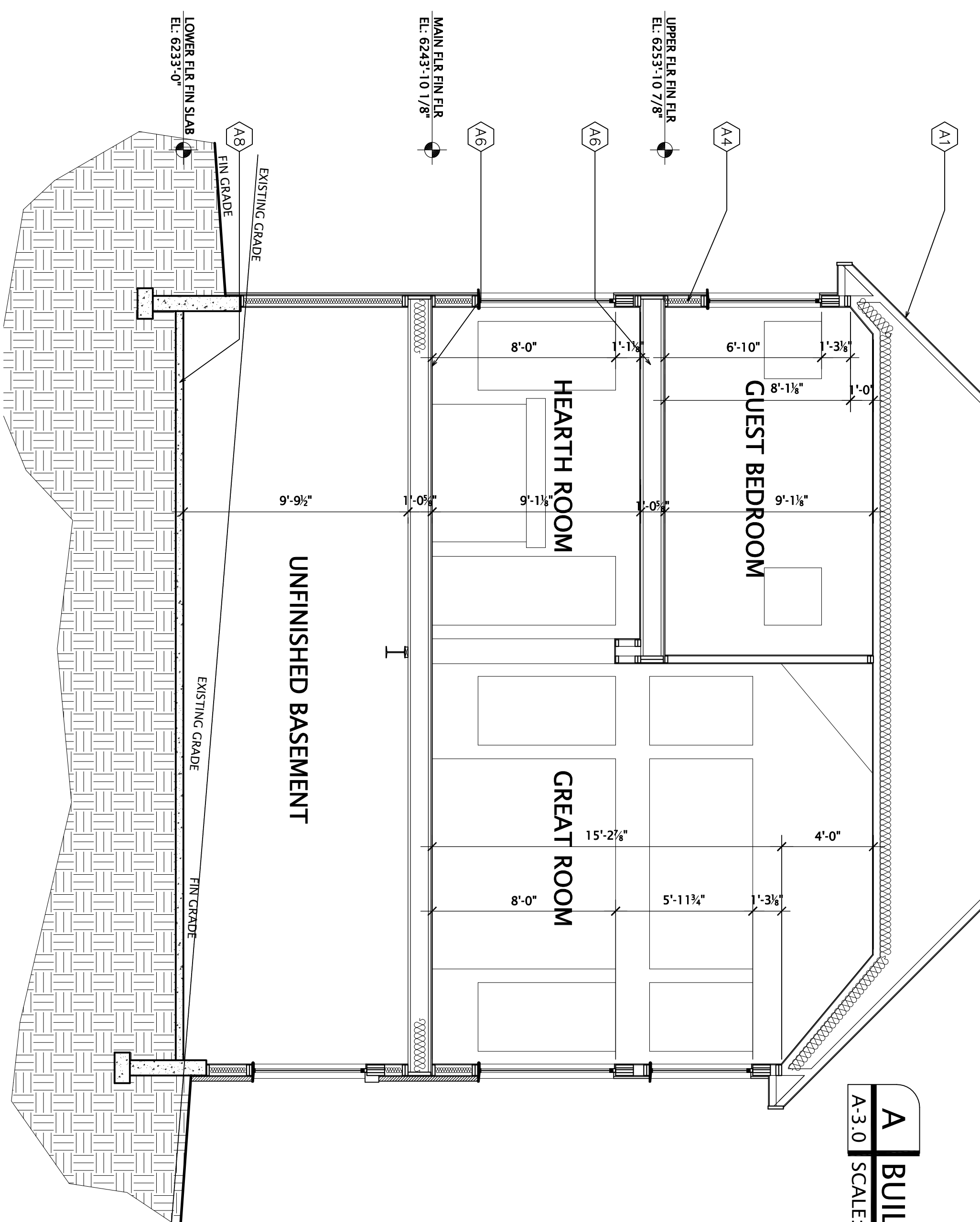


**A BUILDING SECTION**  
A-3.0 SCALE: 1/4" = 1'-0"



**B BUILDING SECTION**  
A-3.0 SCALE: 1/4" = 1'-0"

**SECTION ASSEMBLY NOTES**

<p><b>A1</b> TYPICAL ROOF ASSEMBLY: - 40 YEAR ASPHALT COMPOSITION SHINGLES - ONE LAYER 30# FELT UNDERLAYMENT - SHEATHING (RE: STRUCT) - FRAMING (RE: STRUCT) - R-42 INSULATION</p>	<p><b>A5</b> TYPICAL UPPER FLOOR BALCONY ASSEMBLY: - FROST RESISTANT CERAMIC TILE - MORTAR BED - DRAINAGE LAYER - WATERPROOF MEMBRANE - JOIST &amp; NAUL AT EACH JOIST (RE: STRUCT) - JOIST (RE: STRUCT) RIPPER TO SLOPE 1":12" - R-19 BATT INSULATION (FOIL FACE UP) - 1/2" OR 5/8" C/P BD AT CEILINGS (FINISH PER OWNERS REQUEST)</p>
<p><b>A2</b> TYPICAL VALLEY FLASHING: - 26 GA PRE-FINISHED METAL - 24" MINIMUM UP EACH SIDE OF VALLEY - INSTALL A MINIMUM OF 30" FELT UNDERLAYMENT</p>	<p><b>A6</b> TYPICAL FLOOR / CEILING ASSEMBLY: - JOIST (RE: STRUCT) - 2" RIGID INSUL. AT EACH JOIST (RE: STRUCT) - R-19 BATT INSULATION (FOIL FACE UP) - 1/2" OR 5/8" C/P BD AT CEILINGS (FINISH PER OWNERS REQUEST)</p>
<p><b>A3</b> TYPICAL FLASHING AT ROOF / WALL JUNCTURE: - 26 GA PRE-FINISHED METAL - EXTEND UP WALL AND ONTO ROOF 12" - INSTALL ATOP 30" UNDERLAYMENT</p>	<p><b>A7</b> TYPICAL FOUNDATION ASSEMBLY: - CONCRETE FOUNDATION WALL AND FOOTING (RE: STRUCT) - BITUMINOUS DAMP-PROOFING ON OUTSIDE OF STEM WALL - APPLIED PER MFR SPECS - 4"Ø FLEXIBLE FRENCH DRAIN PIPE SLOPE TO EXTERIOR PER MFR SPECS - 4"Ø PERFORATED DRAIN MEMBRANE (INSTALL PER MFR SPECS - MANDATORY INCLUSION OF CANT AT BOTTOM FOR DRAINAGE AWAY FROM FOOTER / WALL INTERSECT (RE: SOILS REPORT))</p>
<p><b>A4</b> TYPICAL EXTERIOR WALL ASSEMBLY: - EXTERIOR SIDING PER EXT MATERIALS SCHEDULE - 2x6 STUDS @ 16" o.c., UNLESS NOTED OTHERWISE (RE: STRUCT) - 7/16" OSB SHEATHING (RE: STRUCT) - SPOKES / JOISTS W/ 2" MIN. DIA. (RE: STRUCT) - 1/2" OR 5/8" C/P BD AT INTERIOR (FINISH PER OWNERS REQUEST) - PROVIDE FIRE BLOCKING PER CODE - R-21 BATT INSULATION</p>	<p><b>A8</b> TYPICAL CONCRETE SLAB ASSEMBLY: - CONCRETE SLAB (RE: STRUCT) - 6 MIL. VISQUELEN VAPOR BARRIER BETWEEN SLAB AND GRAVEL OVERLAP @ MINIMUM.</p>



SEIDL DESIGN GROUP INC.  
PO BOX 82450  
PORTLAND, OR 97222  
(503)970-8293  
seidldesigngroup.com

WAYNE BLOCK HOMES  
17268 WATERHOUSE CIR UNIT E  
PARKER, COLORADO 80134  
PH (303)902-5633

CUSTOM HOME  
9910 FALCON ROOST POINT  
PARKER, COLORADO 80138

PROJECT #  
S14-005

DATE  
8/29/14

REVISIONS

SHEET #  
A-3.0